

Fw190 A3

RPM ENGINE

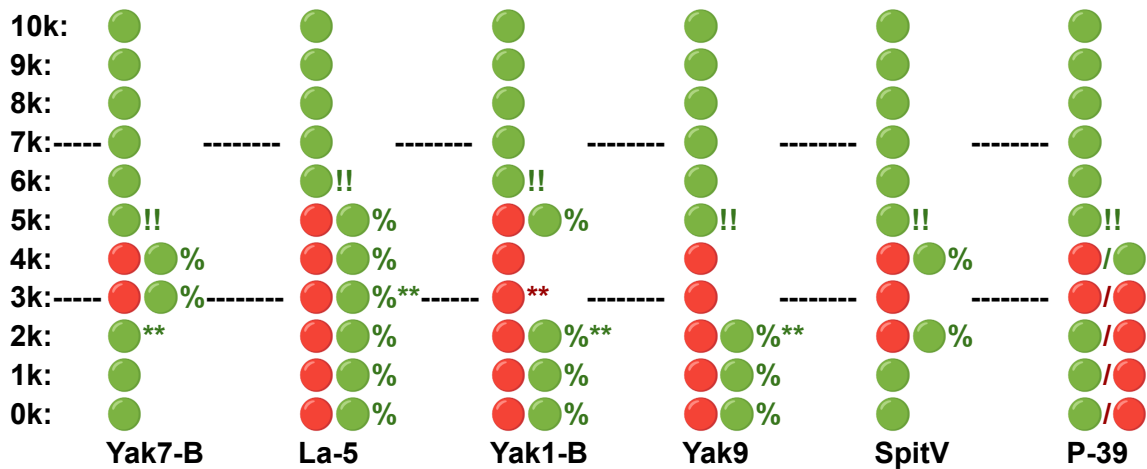
Continuous: **2325** - 6,8 L/min

Combat: **2425** - 7,5 L/min

ENGINE MANAGEMENT

200 Liters: **29 min** - **26 min**

Fuel warn.: 100 Liters - **14 min** - **13min**



*: supercharge

!:alt. incr. advantage

:%engine 100%

/:+3min/-1min

Speed

Take-off: **170/210** (Trim +1,5)

Landing: **160/170** (Trim +1,5)

Emerg. glideslope: **230**

Climb: **280**

Corner: **300** (19s)

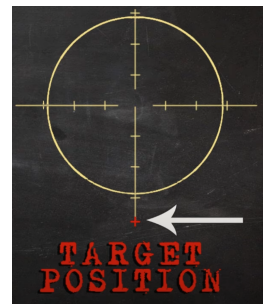
Dive: **850**

EMERGENCY checklist:

- Propellers: clock on 8 and 10
- Emerg. glideslope: **230**
- 10km every 1k meters

Drop bombs Checklist:

- Drop altitude **500m**
- Speed: above **500km/h**
- Trim: nose up



Checklist Take-off:

- Trim: +1,5
- Pull the stick
- Brakes ON + RPM: **1500**
- Brakes OFF + ATA: **1.3**
- Tail up: **120**
- Rotate: **170/210**

Checklist Landing:

- Trim: +1,5
- Pull the stick
- Final: **205/215**
- Touchdown: **160/170**



Fw190 A5

RPM ENGINE

Continuous: **2325** - 6,8 L/min

Combat: **2425** - 7,5 L/min

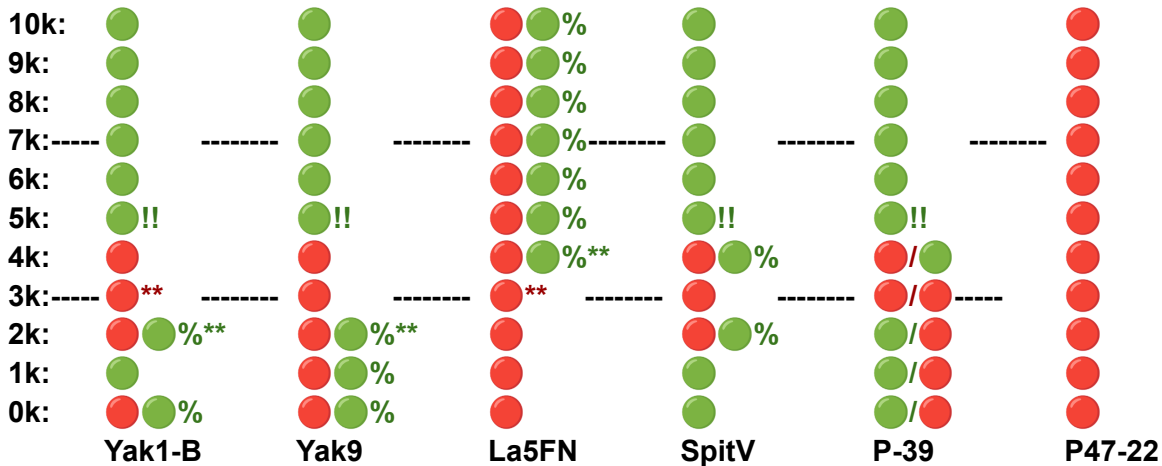
Boost: 10 minutes - 12 L/min

ENGINE MANAGEMENT

Shutters: **105°** (max 120°) **Best: 0%**

200 Liters: **29 min** - **26 min**

Fuel warn.: 100 Liters - **14 min** - **13min**



*: supercharge

!: alt. incr. advantage

=: engine 100%

/: +3min/-1min

Speed

Take-off: **170/210** (Trim +1,5)

Landing: **160/170** (Trim +1,5)

Emerg. glideslope: **230**

Climb: **280**

Corner: **305** (20.2s)

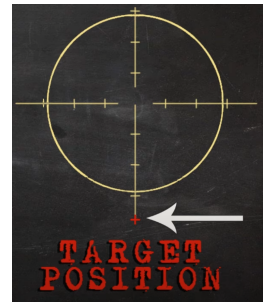
Dive: **850**

EMERGENCY checklist:

- Propellers: clock on 8 and 10
- **Shutters: 0%**
- Emerg. glideslope: **230**
- 10km every 1k meters

Drop bombs Checklist:

- Drop altitude **500m**
- Speed: above **500km/h**
- Trim: nose up



Checklist Take-off:

- **Shutters open**
- Trim: +1,5
- Pull the stick
- Brakes ON + RPM: **1500**
- Brakes OFF + ATA: **1.3**
- Tail up: **120**
- Rotate: **170/210**

Checklist Landing:

- **Shutters closed**
- Trim: +1,5
- Pull the stick
- Final: **205/215**
- Touchdown: **160/170**



Fw190 A6

RPM ENGINE

Continuous: **2325** - 6,8 L/min

Combat: **2425** - 7,5 L/min

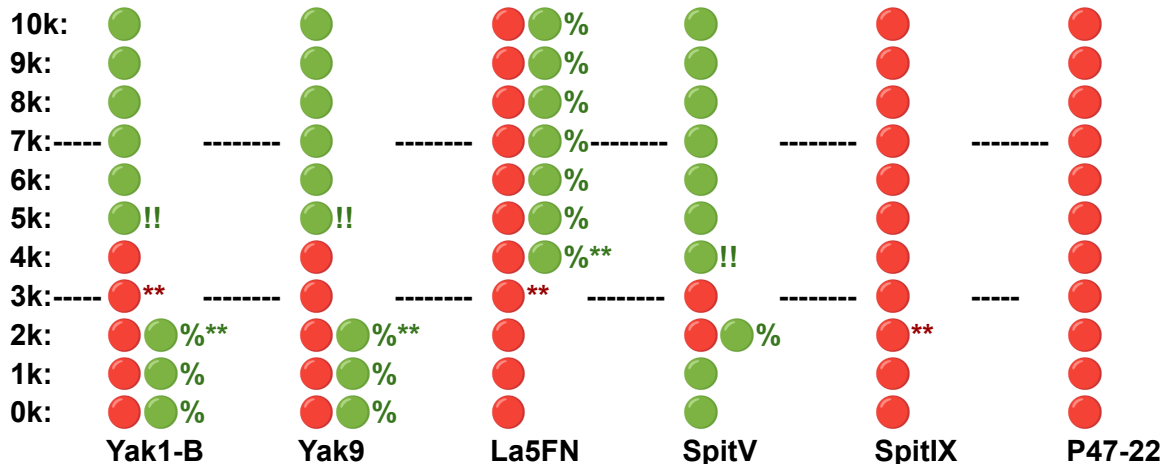
Boost: 10 minutes - 12 L/min

ENGINE MANAGEMENT

Shutters: **105°** (max 120°) **Best: 0%**

200 Liters: **29 min** - **26 min**

Fuel warn.: 100 Liters - **14 min** - **13min**



Speed

Take-off: **170/210** (Trim +1,5)

Landing: **160/170** (Trim +1,5)

Emerg. glideslope: **230**

Climb: **280**

Corner: **310** (23.5s)

Dive: **850**

EMERGENCY checklist:

- Propellers: clock on 8 and 10
- **Shutters: 0%**
- Emerg. glideslope: **230**
- 10km every 1k meters

Drop bombs Checklist:

- Drop altitude **500m**
- Speed: above **500km/h**
- Trim: nose up



Checklist Take-off:

- **Shutters open**
- Trim: +1,5
- Pull the stick
- Brakes ON + RPM: **1500**
- Brakes OFF + ATA: **1.3**
- Tail up: **120**
- Rotate: **170/210**

Checklist Landing:

- **Shutters closed**
- Trim: +1,5
- Pull the stick
- Final: **205/215**
- Touchdown: **160/170**



Fw190 A8

RPM ENGINE

Continuous: 2325 - 6,8 L/min

Combat: 2425 - 7,5 L/min

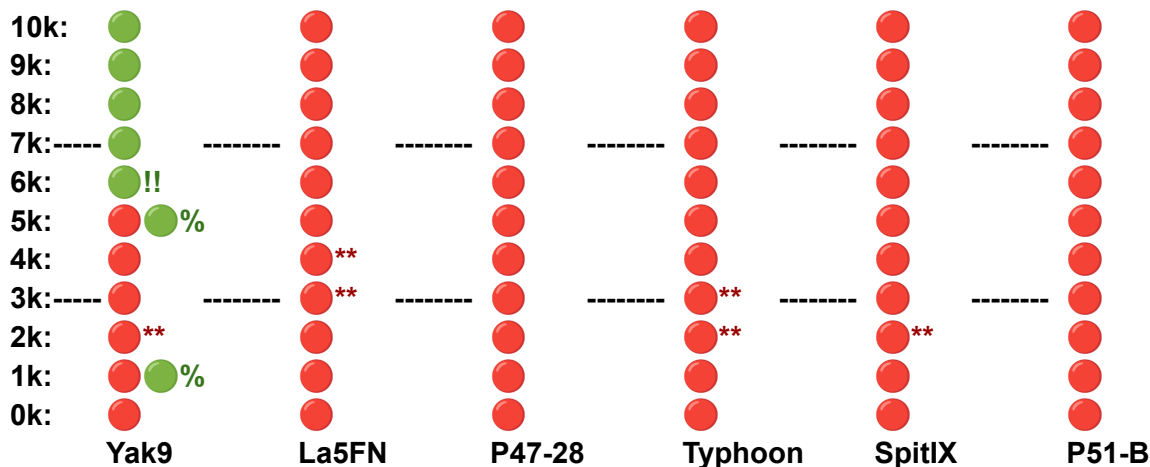
Boost: 10 minutes - 12 L/min

ENGINE MANAGEMENT

Shutters: 105° (max 120°) **Best:** 0%

200 Liters: 29 min - 26 min

Fuel warn.: 100 Liters - 14 min - 13min



Speed

Take-off: 180/220 (Trim +1,5)

Landing: 160/180 (Trim +1,5)

Emerg. glideslope: 230

Climb: 260

Corner: 280 (24,2s)

Dive: 850

EMERGENCY checklist:

- Propellers: clock on 8 and 10
- **Shutters:** 0%
- Emerg. glideslope: 230
- 10km every 1k meters

Drop bombs Checklist:

- Drop altitude 500m
- Speed: above 500km/h
- Trim: nose up



Checklist Take-off:

- **Shutters open**
- Trim: +1,5
- **Pull the stick**
- Brakes ON + RPM: 1500
- **Brakes OFF** + ATA: 1.3
- Tail up: 140
- Rotate: 180/220

Checklist Landing:

- **Shutters closed**
- Trim: +1,5
- Pull the stick
- Final: 215/225
- **Touchdown:** 160/180



Fw190 D9

RPM ENGINE

No smoke: ATA 1.3

Continuous: **3100** - 10 L/min

Combat: **3250** (ATA 1.5) - 11 L/min

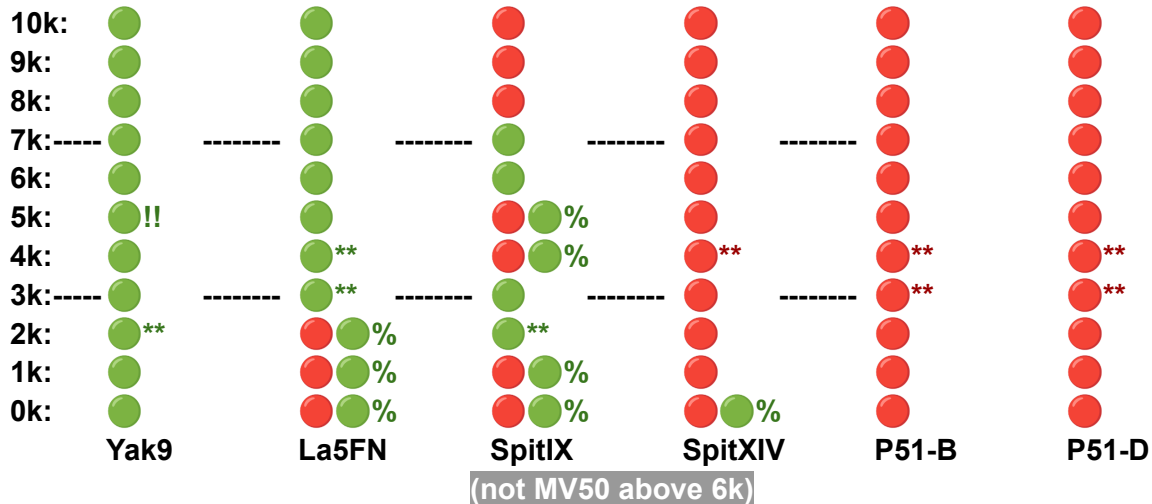
MW50: 10 minutes - 11,5 L/min

ENGINE MANAGEMENT

Termo: 100° (max 110°) Best: 50%

200 Liters: **20 min** - 18 min

Fuel warn.: 100 Liters - 10 min - 9 min



*: supercharge

!: alt. incr. advantage

/: +3min/-1min

Speed

Take-off: **180/220** (Trim +1,5)

Landing: **160/180** (Trim +1,5)

Emerg. glideslope **215/225**

Climb: **280**

Corner: **300** (20s)

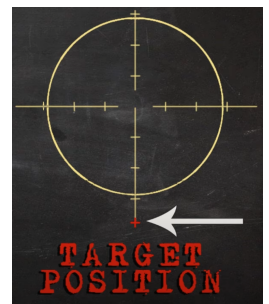
Dive: **850**

EMERGENCY checklist:

- Termo: 0%
- Emerg. glideslope: **230**
- 10km every 1k meters

Drop bombs Checklist:

- Drop altitude **500m**
- Speed: above **500km/h**
- Trim: nose up



Checklist Take-off:

- Termo: 50%
- Trim: +1,5
- Pull the stick
- Brakes ON + RPM: **1800**
- Brakes OFF + ATA: **1.5**
- Tail up: **140**
- Rotate: **180/220**

Checklist Landing:

- Termo: 50%
- Trim: +1,5
- Pull the stick
- Final: **215/225**
- Touchdown: **160/180**

